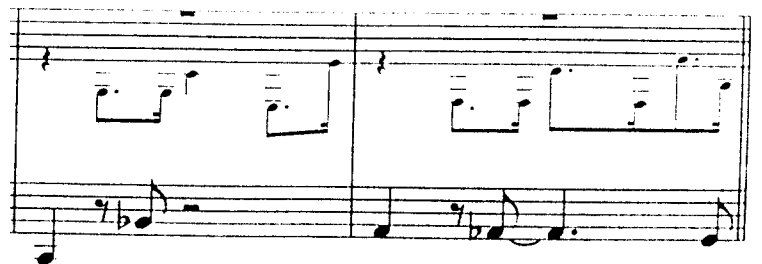


SNOOPY (Suppertime)



[27] [SNOOPY]

sup - per - time. — Yeah, it's sup - per - time. — Oh, it's

[R.H. Piano play harmonic cue, through bar 32, for rehearsal only.]

sup - sup - sup - per - time, ver - y best time of day. It's

Pno. *mp*

[35]

sup - per - time. — Yeah, it's sup - per - time. — And when

Pno.

Bs., Drs. time

sup - per - time comes can sup - per be far a - way?

[Reh. pno. play cue if no drums are present]

subf

[43] Stop time

Bring on the soup dish, bring on the cup.

Bs., Drs., Pno.

Bring on the ba-con and fill me up. 'Cause it's sup - per

45

sub p

Sup - per, sup - per, sup - per - time.

Alto solo break

48

+Pno., Bi